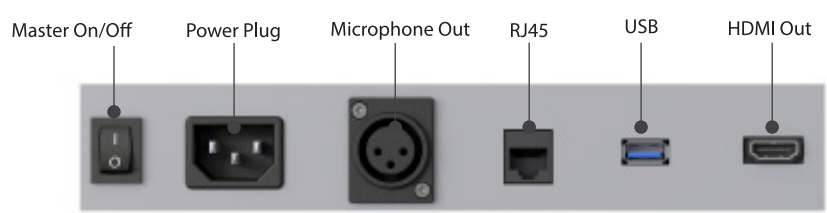






- 1 - Switch / Scalar  
2 - Audio Amplifier  
3 - Clock & Timer  
4 - Visualizer  
5 - Power 220V AC
- 6 - Shock Mount  
7 - 18" Microphones  
8 - 22" Multi Touch Screen  
9 - Creapen Annotaion Software  
10 - Drawer



Complex presentations that require multiple additional devices, communication and power ports. AV control panels, EP22A Pro covers all of them. Professional and more technical meetings. conferences and classes are the places for EP22A Pro. Well designed workds areas on top surface allow the speaker to make the meeting rooms, and lecture halls. it is equipped with personal computer.

## EP22A Pro

	EP22A PRO
Multi touch speaker screen	22"
Player PC : Intel 4,10 GHz CPU, 120 GB SSD, Windows 10 Pro	✓
Remotely Controlled Electrical Lifting Column for Height Adjustment	✓
Switch & Scalar (HDMI & VGA in)	✓
Creapen Annotation Software	✓
3,5" Digital Touch Timer	✓
Visualizer	✓
Speaker	Optional
Stereo Amplifier	Optional

# Speaker Screen

## ■ iiyama Prolite T22

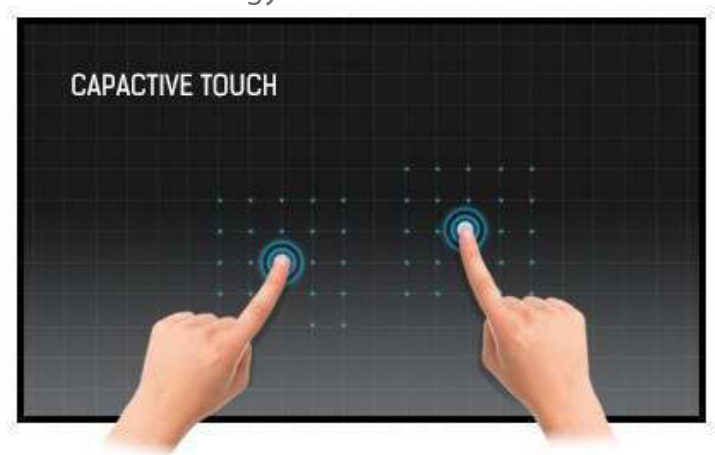


22" 10 point touch monitor with edge-to-edge glass and AMVA panel

With its Full HD (1920x1080) resolution and accurate Projective Capacitive 10 point touch technology, the ProLite T22 delivers seamless and accurate touch response.

The AMVA panel technology guarantees high performance with excellent colour reproduction and high contrast, making it an excellent choice for a vast array of demanding interactive applications.

### Touch Technology



This technology uses a sensor-grid of micro-fine wires integrated into the glass that covers the screen. Touch is detected because electrical characteristics of the sensor grid change when human finger is placed on the glass. Thanks to the glass overlay this technology is highly durable, and the touch function remains unaffected even if the glass is scratched.

It offers perfect picture performance and will work with human finger (also latex gloved) and stylus-pen.

Specifications	
Diagonal	21.5"; 55cm
Aspect Ratio	16 : 9
Panel Amva	LED
Native Resolution	Full HD 1080p, 1920 x 1080 ( 2.1 megapixel)
Brightness	250 cd/m² typical
Brightness	215 cd/m² with touch panel
Advanced Contrast	12 000 000 : 1 ACR
Static Contrast	3 000 : 1 with touch panel
Response Time	8 ms
Viewing Zone	horizontal/vertical: 178°/ 178°; right/left: 89°/ 89°; up/down: 89°/ 89°
Display Colour	16.7 million
Blue Light Reducer	yes
Touch Technology	projective capacitive
Touch Points	10
Glass Hardness	7H minimum
Light Transmittance	85%
Display Area	H X W 268.1 x 476.6 mm; 10.6" x 18.8 "
Pixel Pitch	H X V 0.248 x 0.248 mm
Horizontal Sync	30 - 80 KHz
Vertical Sync	56 - 75 Hz
Synchronization	Separate Sync
INTERFACES / CONNECTORS / CONTROLLERS	
Analog Input Connector	VGA
Digital Input Connector	DVI, HDMI
USB HUB	UP 1 x USB 3.0 / DOWN 4 x USB 3.0
Controls	USB (touch), USB 3.0

Microphone

■ Shure 18 CVG18S-B Microphone



Designed with dual gooseneck sections for full articulation, the CVG18 provide scalable, best-in-class performance in a wide variety of locations.

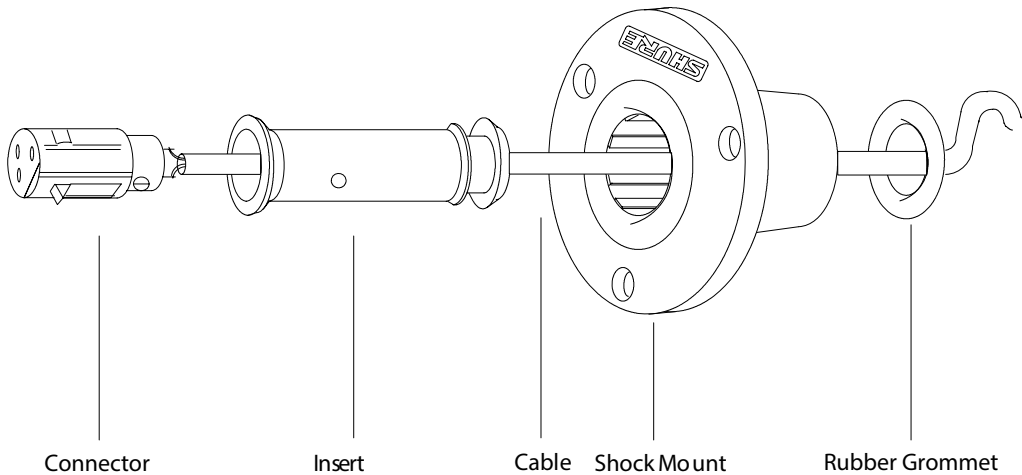
Features

- Cardioid polar pattern with tailored response for speech
- Dual-section gooseneck enables ease of positioning and placement options
- Included Flange Mount and available snap-fit windscreens (ACVG4WS-B – 4 pack)
- With Mute switch/LED,
- Guards against unwanted RF Interference from portable wireless devices gh resistance to intense nearby radio signals
- Superior Shure design and rugged, dependable construction
- Noise by up to 20 dB.

Specifications	
Cartridge Type	Electret Condenser
Frequency Response	70–16000 Hz
Polar Pattern	Cardioid
Output Impedance	180 Ω
Sensitivity (at 1 kHz , open circuit voltage)	–33 dBV/Pa[1] (22 mV)
Maximum SPL (1 kHz at 1% THD)	120 dB SPL
Signal to Noise Ratio (referenced at 94 dB SPL)	67 dB
Dynamic Range	93 dB
Self Noise (equivalent SPL, A-weighted, typical)	27 dB SPL
Common Mode Rejection (10 Hz to 100 kHz)	45 dB
Preamplifier Output Clipping Level (1% THD)	–7 dBV
Polarity	3
Power Requirements	11–52 V DC[4], 2.0 mA

■ Shure A400SMXLR Shock Mount

Shure A400SMXLR Shock Mount Socket  
A400SMXLR Shock Mount decouples a microphone from the mounting surface and reduces transmission of impact or surface



# Switch & Scaler

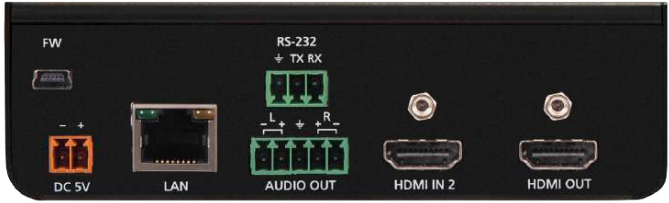
## Atlona AT-HD-SC-500



Front Panel



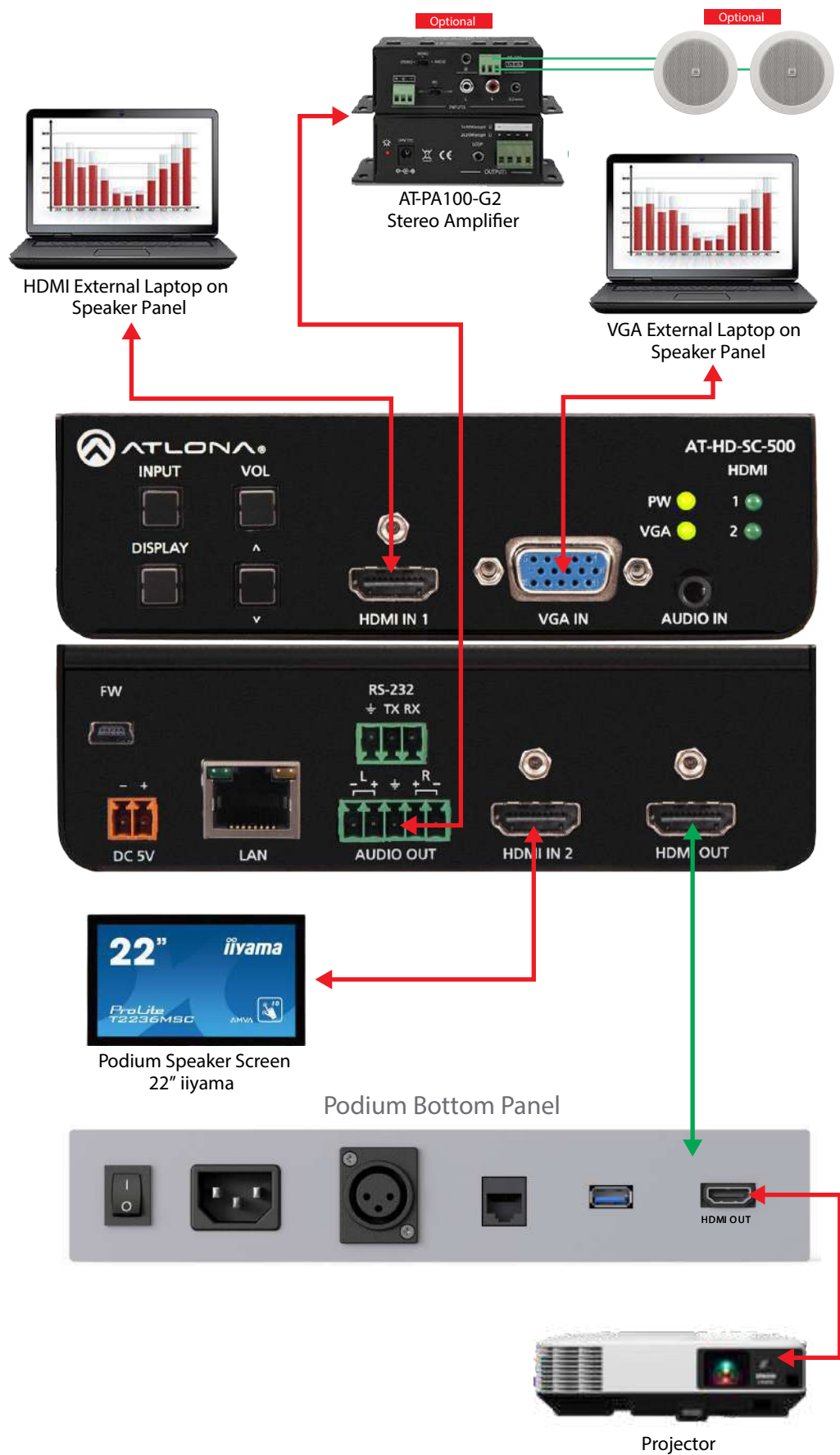
Rear Panel



The Atlona AT-HD-SC-500 is a scaler with built-in 3x1 switcher for HDMI and VGA signals. It features two HDMI inputs and a VGA input with 3.5mm audio connector. The scaler is designed to take video signals from switchers, PCs or laptops and scale them to an HDMI output at a wide-range of HDTV and PC resolutions, up to 1080p/60Hz and WUXGA (1920x1200).

For ease of operation, the AT-HD-SC-500 features auto-switching for active input selection when sources are connected or if there is a change in source power status. Input selection can also be controlled from the front panel, RS-232, or TCP/IP commands.

Specifications	
Video IN	1080p@23.98/24/25/29.97/30/50/59.94/60Hz, 1080i@50/59.94/60Hz, 720p@50/59.94/60Hz
Preferred input resolution	800x600, 1024x768, 1280x720, 1280x800, 1366x768, 1920x1080, 1920x1200
Video OUT	1080p@23.98/24/25/29.97/30/50/59.94/60Hz, 1080i@50/59.94/60, 720p@25/29.97/30/50/59.94/60
Color Space	YUV, RGB
Chroma SubsDampling	4:4:4, 4:2:2
Color Depth	8-bit, 10-bit, 12-bit
Analog IN	3.5mm stereo jack, -10 dBu nominal input
Analog OUT	Balanced, +4 dBu nominal analog output. Max output +18 dBu
HDMI	Dolby Digital, DTS 5.1, Dolby Digital Plus, Dolby TrueHD, DTS-HD Master Audio, Dolby Atmos
Sample Rate	32kHz, 44.1kHz, 48kHz, 88.2kHz, 96kHz, 176.4kHz, 192kHz
Bit rate	up to 24-bit
Distance HDMI @ 1080p	up to 10 meters up to 30 feet
Signal Bandwidth	6.75 Gbps
CEC HDCP	Switchable - Compliant/Non-compliant
Temperature Operating	0°C to 50°C 32°F to 122°F
Temperature Storage	-20°C to 60°C -4°F to 140°F
Humidity	20 to 90% non-condensing
Power	10.4W
Consumption	Input: AC100-240V ~ 50/60Hz 0.5A
Supply	Output: DC 5V/3.6A







Specifications	
Operating System	Windows 10 Pro
Processor	Intel 4,10 GHz CPU
Chipset	Intel H310 Express chipset
Ram	4GB
Video	HDMI x1 + DisplayPort x1 Supported double screens , 4K Play
Storage	120 GB SSD
Audio	2 Channels
Network	2 x 10/100/1000 Gigabit LAN (Intel Chipset), WIFI (Optional)
Ports	4 x USB3.0 - 2 x USB2.0 - 1 x HDMI - 1 x Display Port - 1 x eSATA+USB2.0 COM port 2 x RJ45
Case	Ultra Mini ITX
Power	90W 19V Adapter





### USB Distance Learning Visualizer

The AVerVision M5 is a USB visualizer specially made for distance learning and remote teaching. Its foldable, grab-and-go design lets you start online courses in mere moments. Simply adjust the camera head to self-view for a tutoring session, and then quickly find the best angle for demonstrating materials. Add in AVerTouch software’s newest AI functions, and you can maximize teaching engagement even when livestreaming

8M

3264 X 2448 (8M)  
Output Resolution

16X

16x  
Digital Zoom

A3

A3  
Shooting Area

Super  
Resolution AI

Curve  
Flattening AI

Visualizer Technical specifications	
Image Sensor	1/3.2" CMOS
Total Pixels	8 Megapixels
Output Resolution	Up to 3264x2448 (8M)
Zoom	16X Digital Zoom (via software)
Frame Rate	Full HD 1080P at 60fps
Shooting Area	Larger than A3 (420 X 315mm)
Focus	Auto / Manual (via software)





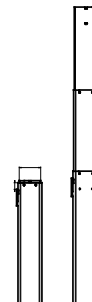
# Height Adjustment

## ■ Linak DL6 Lifting Column



The hallmarks of the DL6 are the 3-stage inline design meaning that the motor is hidden inside the profiles giving the column a very sleek and elegant design easy to integrate in various desk designs. The 3-stage construction ensures a very low built-in dimension meaning that people of all heights can use the desk. The very low noise level ensures pleasant use when driving.

- Max. thrust 700 N per column
- Max speed: 38 mm/s unloaded
- Bending moment: Max. 150 Nm dynamic
- Low and uniform noise level
- PVC-free column



### Specifications

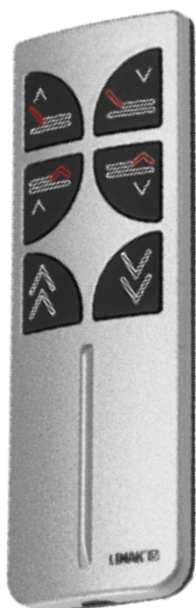
Single or 2, 3, 4 parallel drive

Multi-parallel is possible only when in combination with CBD6S

Duty cycle: 10% ~ 2 minutes of continuous use at full load, followed by 18 minutes of pause

Ambient temperature: +5° to +40°C

## ■ Remote Control



The Hand Control HB10 wireless is designed for control podium remotely The HB10 wireless combines ergonomic design and functionality into a user-friendly hand control with big intuitive buttons and without any annoying cable.

- Hand control controlling 2 channels
- Easily operated by both left and right-handed persons
- Colour on top part is silver (RAL 7035) and the bottom part is a soft black rubber coating
- Simultaneous drive up and down
- Transmitter signal based on 433 MHz or Bluetooth® connection
- Long-life batteries included. Battery lifetime at normal use of 1 minute per day is about 10 years

# Amplifier

## ■ Atlona Stereo/Mono Audio Amplifier



- AT-PA100-G2 is a class D amplifier which uses less energy, doesn't require heat syncs or power transformers, making it smaller than a class A/B amplifier
- Stereo, mono, and bridge audio speaker output connections available through captive screw
- Has a variable 3.5mm audio loop out for cascading to another AT-PA100-G2 or connecting to other audio amplifiers
- 3 pin captive screw MIC input can support balanced and unbalanced signals
- Energy efficient standby mode only requires 4Ws of power. AT-PA100-G2 goes into standby mode if an audio signal isn't present
- Control through the panel buttons, an (optional) IR remote, and RS-232
- 3 position input switch: 48V phantom power - best for condenser MICs without battery power
- MIC - Great for Dynamic MICs and battery powered condenser MICs Line - Connect a Wireless
- Volume, Bass, and Treble can be controlled through RS-232, IR, or panel buttons

Specifications	
Rated Output	20 W x 2 40 W x 1 (Bridged Operation)
Gain	32dB
Frequency Range	20Hz to 20KHz
Signal/Noise Ratio	80dB (at max output)
Total Harmonic Distortion	1% (1KHz), 0.3% (20KHz) -- at nominal levels
Input Impedance	Input 1&2: >10KΩ
MIC Input Impedance	48V: 35KΩ MIC: 10KΩ LINE: 75KΩ
Output Impedance	3.5mm Loop Out: 50Ω stereo Speaker out: 4 ~ 8Ω Amplifier
Stereo Channel Separation	75dB from 20Hz to 20KHz
Common Mode Rejection Ratio	70dB from 20Hz to 20KHz
MIC Audio Detection Delay	1ms
Temperature Operating	0°C to 40°C 32°F to 104°F
Temperature Storage	-20°C to 60°C -4°F to 140°F
Temperature Humidity	20 to 90% non-condensing
Power Consumption	40W
Power Idle Consumption	4W
Power Supply	Input: AC100~240V 50/60Hz Output: DC 24V/5A

## ■ Dual Cone Loudspeaker



The Apart CM4T is the ideal match between size and sound! Just one size bigger than a halogen-spot model (CM3T), this 70 /100 volt loudspeaker looks great and produces an amazing powerful sound.

Features
outside diameter in mm 135
cutout in mm 108
loudspeaker system dual cone
woofer cone material coated paper
colour white / black / silver
70V transformer power taps in watts 6 - 3 - 1.5 - 0.75
low impedance dynamic power in watts 30
SPL 1W/1m in dB 88
frequency response in Hz 90 - 19K
applicable low impedance yes

# Application

■ Creapen Software

## Screen Annotation & Screen Recording Solution for Presentations

CreaPen is an extremely simple yet powerful screen annotation and recording software. You can easily write on top of any other application that is currently active on the desktop, even on a running video. You can then save your annotations as an image file or even record the whole session as a video for sharing. It is a useful tool for presenters to communicate and share ideas during a live session, for educators to create effective video tutorials and for salespeople to create impressive video presentations.



Text Input



Whiteboard



Multiple Pages



Screen  
Recording



Screen  
Annotation

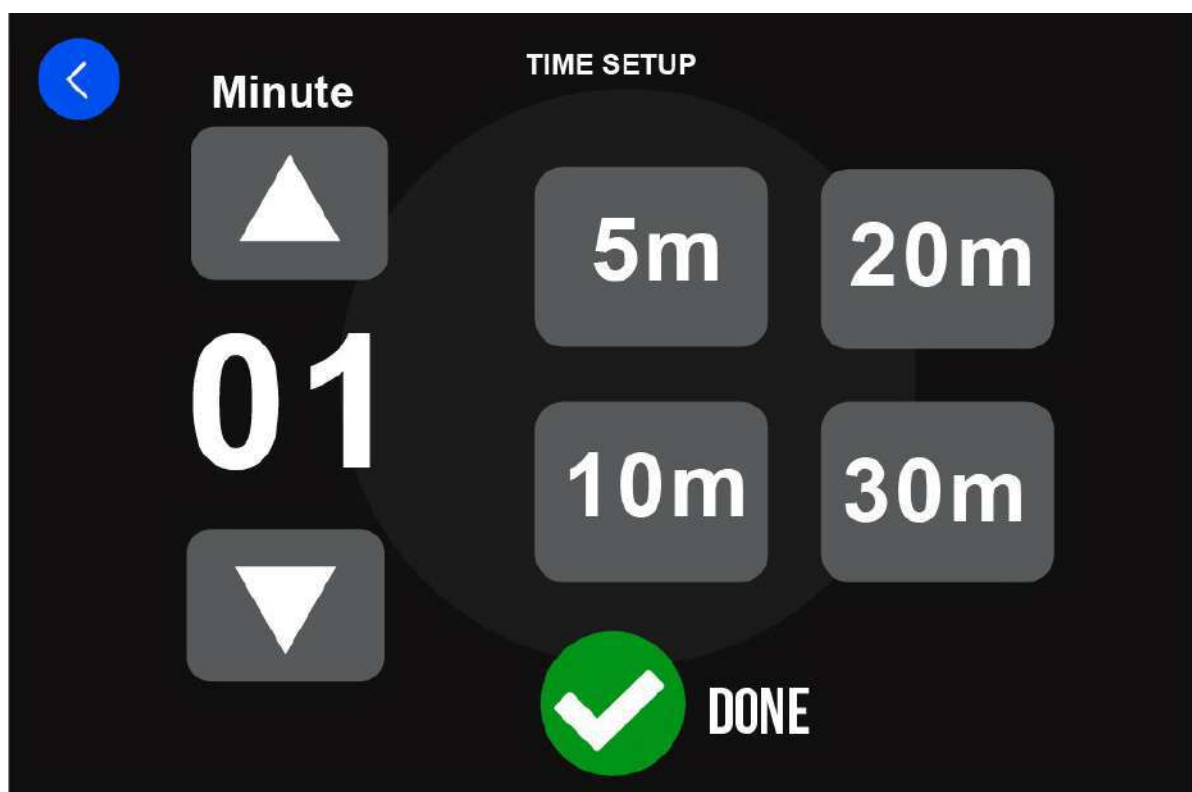
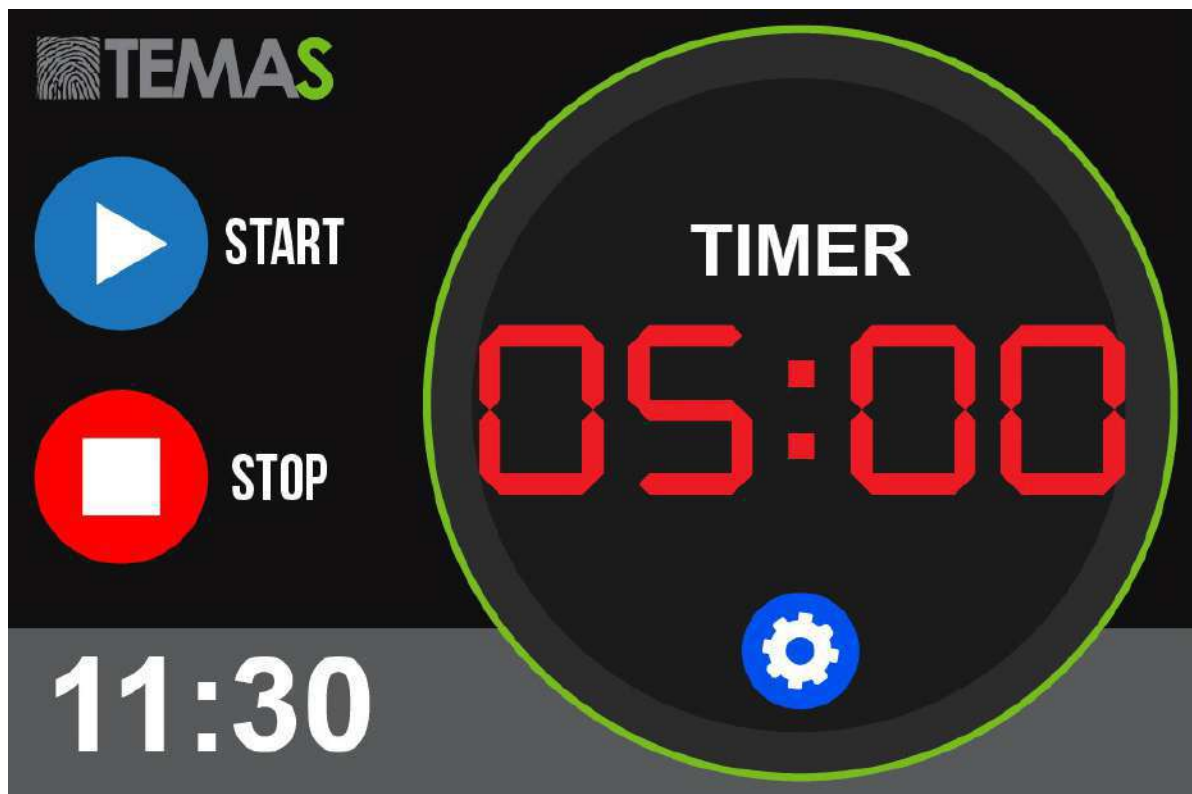


Web Camera

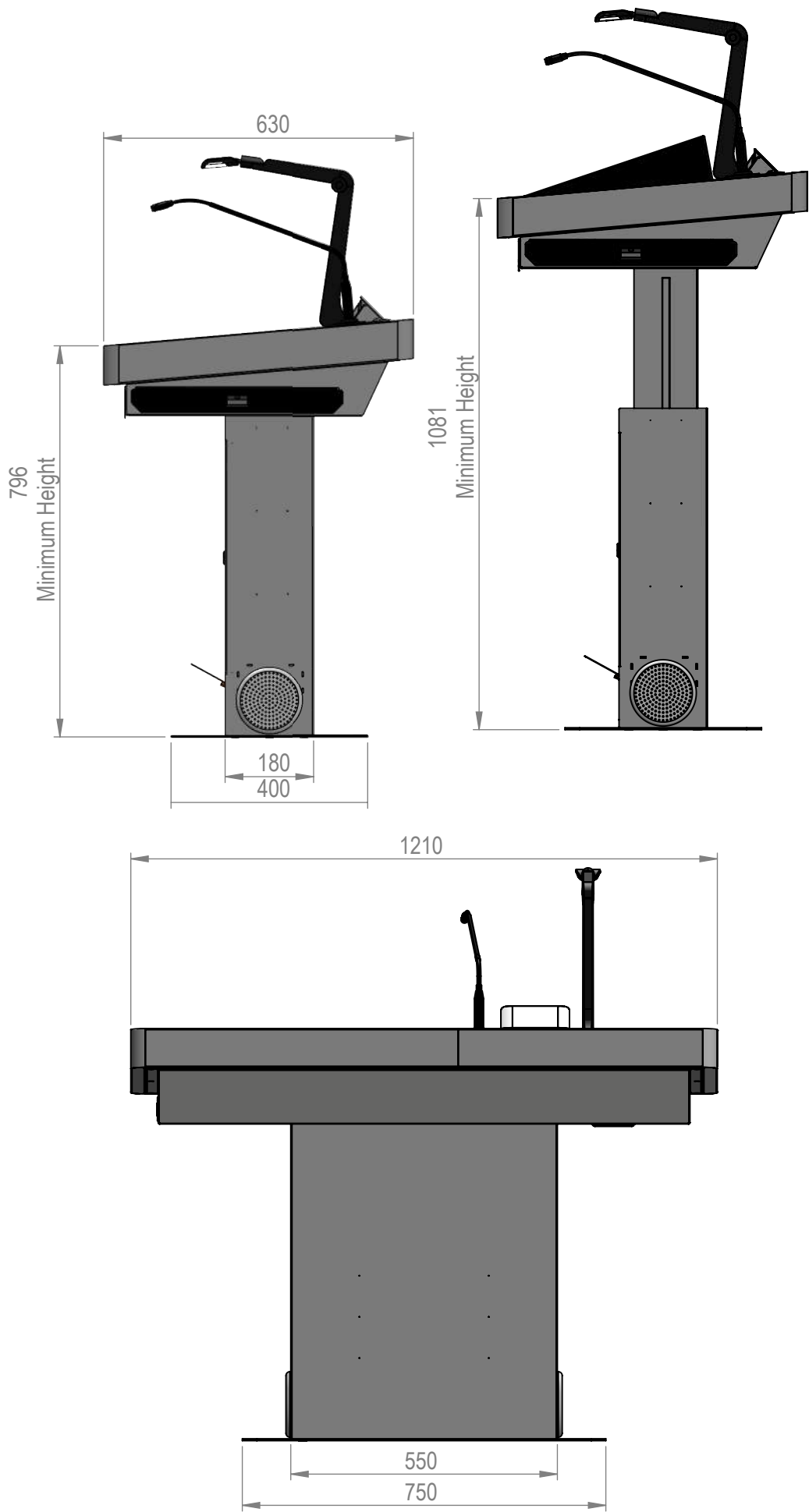


# Application

■ 3,5" Touch screen Timer & Clock



■ MECHANICAL SPECIFICATIONS



■ Technical specifications

	EP22A PRO
■ Lecturer Panel	22”
Screen	
Resolution	1920x1080
Brightness	250 cd/m2
Aspect Ratio	16:9
Number of Touch Point	10 Points Capacitive
Lecturer Panel PC	
CPU	Intel 4,10 GHz
RAM	4 GB
HDD	120 GB SSD
Operation System	Windows 10 Pro
■ Microphone	
Lenght	18”
No of Microphone	1 pcs
Output Connector	3-way XLR(Male)
Microphone Type	Cardioid
Frequency Response	50 - 18 kHz
Power ON Indicator	LED
■ Visualizer	
Image Sensor	1/3.2” CMOS
Total Pixels	8 Megapixels
Output Resolution	Up to 3264x2448 (8M)
Zoom	16XDigital Zoom (via software)
Frame Rate	Full HD 1080P at 60fps
Shooting Area	Larger than A3 (420 X 315mm)
Focus	Auto / Manual (via software)
■ Outputs (Bottom of Podium)	
HDMI	Available (Projector Out)
Ethernet	Network Connection
XLR for Microphone	3-way XLR(Male)
■ Electrical Lifting Column for Height Adjustment	
Movement	Vertical (Up/Down)
Control	By Buttons (Up/Down) and Remote Control
Speed	Max speed: 38 mm/s
Lifting Strength	700N
Locking System	Automatic Locking when engine not working
Engine Type	Electrical
■ Mechanical Specs	
Outline Dimesion(mm)Set	550 x 800 x 1091
Outlibe Dimension(mm)Package	670 x 920 x 1300
Weight(kg)	Set: 105 kg Package: 165 kg



