



Connectivity In



Connectivity Out



Zurich covers your professional presentation requirements and complex needs with its complete solutions. Sliding top panel both protects your touch display and becomes a platform for your documents, laptop. Multi-purpose complete connector panels give ability to access to power, external projector and display devices. Speakers can convey their voice through meeting rooms and lecture halls.

Zurich has a large body with enough space to store other sound and image devices. All the devices of an auditorium conference room in the same place without the need for an external space.

	Zurich
Multi touch speaker screen	22"
Player PC: Intel i3 4GB, 120 GB SSD Win 10 Embedded iot OS	✓
Switcher & scalar (HDMI & VGA in)	✓
Microphone	✓
Creapen Annotation software	✓
3.5" Digital touch timer	✓
Speakers	Optional
Stereo amplifier	Optional



Speaker Screen

iiyama Prolite T2236MSC-B2

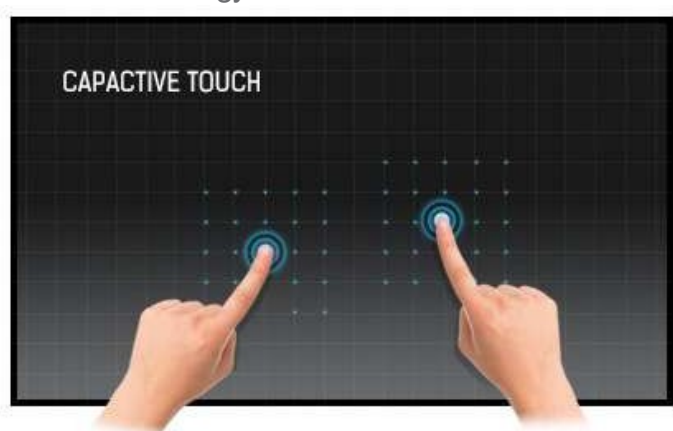


22" 10 point touch monitor with edge-to-edge glass and AMVA panel

With its Full HD (1920x1080) resolution and accurate Projective Capacitive 10 point touch technology, the ProLite T2236MSC delivers seamless and accurate touch response.

The AMVA panel technology guarantees high performance with excellent colour reproduction and high contrast, making it an excellent choice for a vast array of demanding interactive applications.

Touch Technology



This technology uses a sensor-grid of micro-fine wires integrated into the glass that covers the screen. Touch is detected because electrical characteristics of the sensor grid change when human finger is placed on the glass. Thanks to the glass overlay this technology is highly durable, and the touch function remains unaucted even if the glass is scratched.

It ouers perfect picture performance and will work with human finger (also latex gloved) and stylus-pen.

Diagonal	21.5"; 55cm
Aspect Ratio	16 : 9
Panel Amva	LED
Native Resolution	Full HD 1080p, 1920 x 1080 (2.1 megapixel)
Brightness	250 cd/m ² typical
Brightness	215 cd/m ² with touch panel
Advanced Contrast	12 000 000 : 1 ACR
Static Contrast	3 000 : 1 with touch panel
Response Time	8 ms
Viewing Zone	horizontal/vertical: 178° / 178°; right/left: 89° / 89°; up/down: 89° / 89°
Display Colour	16.7 million
Blue Light Reducer	yes
Touch Technology	projective capacitive
Touch Points	10
Glass Hardness	7H minimum
Light Transmittance	85%
Display Area	H X W 268.1 x 476.6 mm; 10.6" x 18.8"
Pixel Pitch	H X V 0.248 x 0.248 mm
Horizontal Sync	30 - 80 KHz
Vertical Sync	56 - 75 Hz
Synchronization	Separate Sync
INTERFACES / CONNECTORS / CONTROLLERS	
Analog Input Connector	VGA
Digital Input Connector	DVI, HDMI
USB HUB	UP 1 x USB 3.0 / DOWN 4 x USB 3.0
Controls	USB(touch), USB 3.0



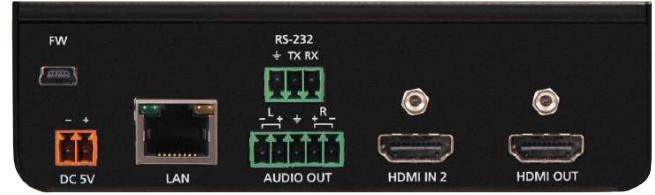
Switch & Scaler

Atlona AT-HD-SC-500

Front Panel



Rear Panel



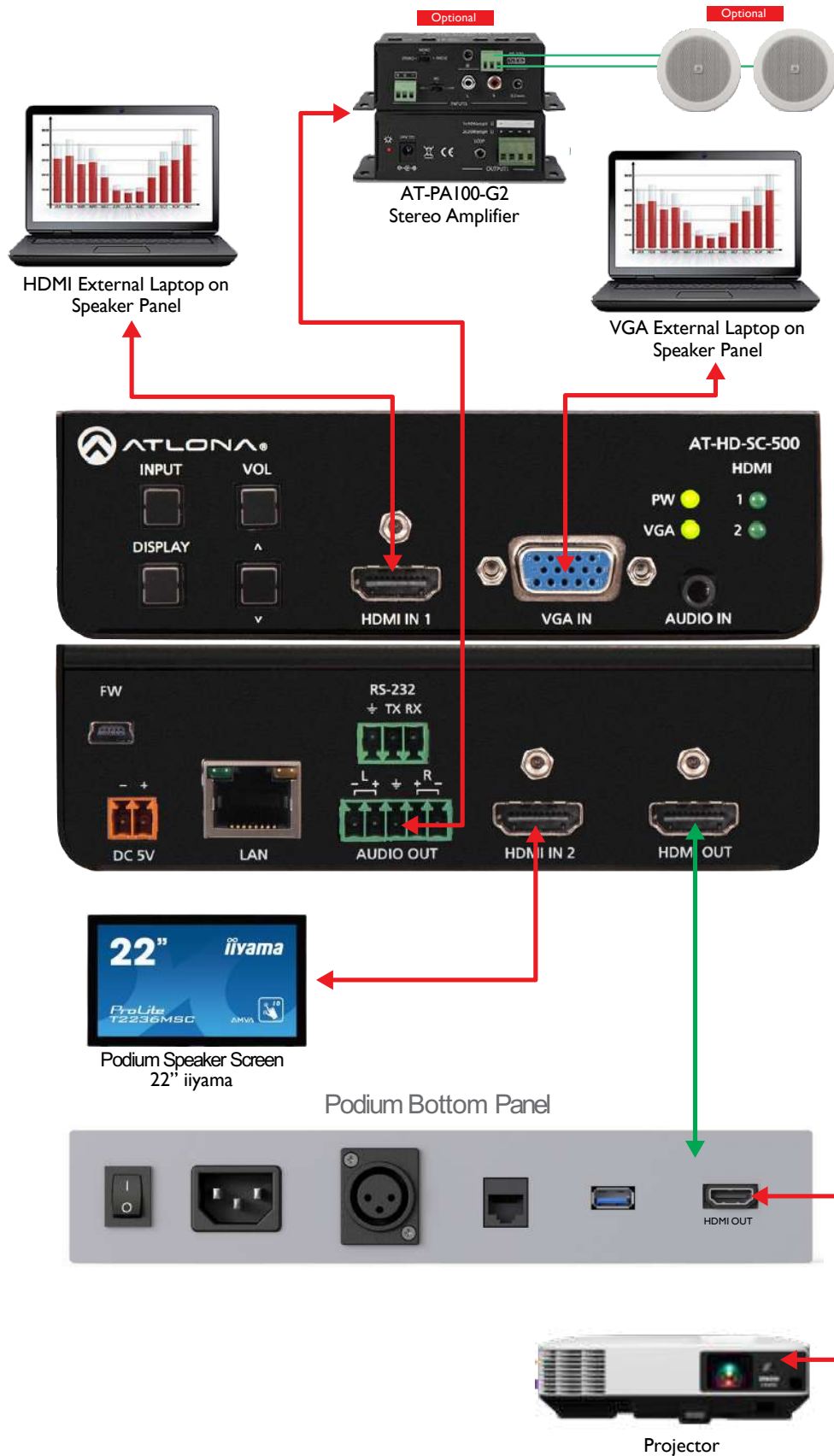
The Atlona AT-HD-SC-500 is a scaler with built-in 3x1 switcher for HDMI and VGA signals. It features two HDMI inputs and a VGA input with 3.5mm audio connector. The scaler is designed to take video signals from switchers, PCs or laptops and scale them to an HDMI output at a wide-range of HDTV and PC resolutions, up to 1080p/60Hz and WUXGA (1920x1200).

For ease of operation, the AT-HD-SC-500 features auto-switching for active input selection when sources are connected or if there is a change in source power status. Input selection can also be controlled from the front panel, RS-232, or TCP/IP commands.

Video IN	1080p@23.98/24/25/29.97/30/50/59.94/60Hz, 1080i@50/59.94/60Hz, 720p@50/59.94/60Hz
Preferred input resolution	800x600, 1024x768, 1280x720, 1280x800, 1366x768, 1920x1080, 1920x1200
Video OUT	1080p@23.98/24/25/29.97/30/50/59.94/60Hz, 1080i@50/59.94/60, 720p@25/29.97/30/50/59.94/60
Color Space	YUV, RGB
Chroma Subsampling	4:4:4, 4:2:2
Color Depth	8-bit, 10-bit, 12-bit
Analog IN	3.5mm stereo jack, -10 dBu nominal input
Analog OUT	Balanced, +4 dBu nominal analog output. Max output +18 dBu
HDMI	Dolby Digital, DTS 5.1, Dolby Digital Plus, Dolby TrueHD, DTS-HD Master Audio, Dolby Atmos
Sample Rate	32kHz, 44.1kHz, 48kHz, 88.2kHz, 96kHz, 176.4kHz, 192kHz
Bit rate	up to 24-bit
Distance HDMI @ 1080p	up to 10 meters up to 30 feet
Signal Bandwidth	6.75 Gbps
CEC HDCP	Switchable - Compliant/Non-compliant
Temperature Operating	0°C to 50°C 32°F to 122°F
Temperature Storage	-20°C to 60°C -4°F to 140°F
Humidity	20 to 90% non-condensing
Power	10.4W
Consumption	Input: AC100-240V ~ 50/60Hz 0.5A
Supply	Output: DC 5V/3.6A



Switch & Scaler Connection



Front Panel



Rear Panel



Specifications	
Operating System	Windows 10 Embedded IoT
Processor	Intel Core i3
Chipset	Intel H310 Express chipset
Ram	4GB
Video	HDMI x1 + DisplayPort x1 Supported double screens , 4K Play
Storage	120 GB SSD
Audio	2 Channels
Network	2 x 10/100/1000 Gigabit LAN (Intel Chipset), WIFI (Optional)
Ports	4 x USB3.0 - 2 x USB2.0 - 1 x HDMI - 1 x Display Port - 1 x eSATA+USB2.0 COM port 2 x RJ45
Case	Ultra Mini ITX
Power	90W 19V Adapter



Microphone

Shure 18 CVG18S-B Microphone



Designed with dual gooseneck sections for full articulation, the CVG18 provide scalable, best-in-class performance in a wide variety of locations.

Features

- Cardioid polar pattern with tailored response for speech
- Dual-section gooseneck enables ease of positioning and placement options
- Included Flange Mount and available snap-fit windscreens (ACVG4WS-B – 4 pack)
- With Mute switch/LED,
- Guards against unwanted RF Interference from portable wireless devices gh resistance to intense nearby radio signals
- Superior Shure design and rugged, dependable construction
- Noise by up to 20 dB.



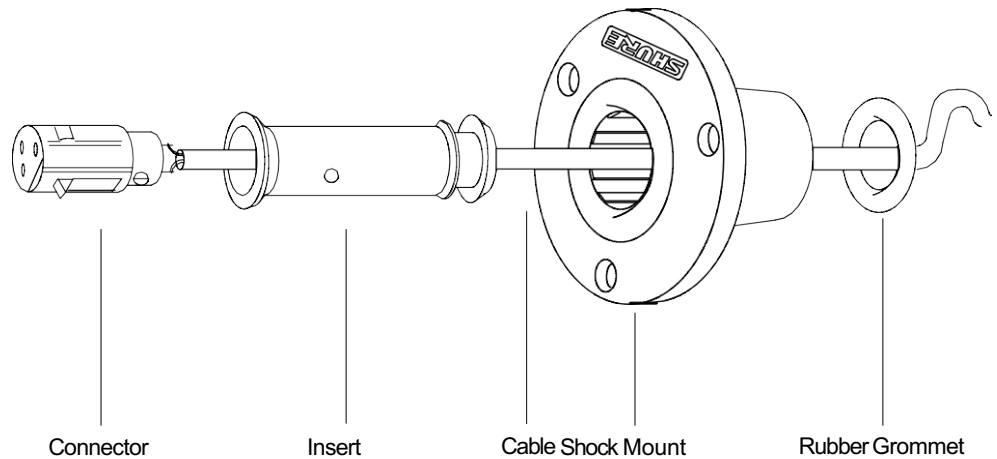
Specifications

Cartridge Type Electret Condenser	Electret Condenser
Frequency Response	70–16000 Hz
Polar Pattern	Cardioid
Output Impedance	180 Ω
Sensitivity (at 1 kHz , open circuit voltage)	–33 dBV/Pa[1] (22 mV)
Maximum SPL(1 kHz at 1% THD)	120 dB SPL
Signal to Noise Ratio (referenced at 94 dB SPL)	67 dB
Dynamic Range	93 dB
Self Noise (equivalent SPL, A-weighted, typical)	27 dB SPL
Common Mode Rejection (10 Hz to 100 kHz)	45 dB
Preamplifier Output Clipping Level (1% THD)	–7 dBV
Polarity	3
Power Requirements	11–52 V DC[4], 2.0 mA

Shure A400SMXLR Shock Mount

Shure A400SMXLR Shock Mount Socket

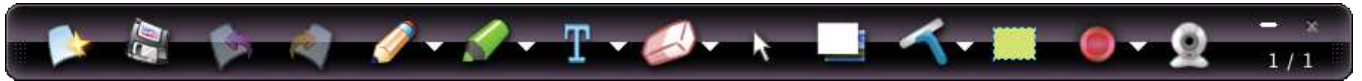
A400SMXLR Shock Mount decouples a microphone from the mounting surface and reduces transmission of impact or surface





Screen Annotation & Screen Recording Solution for Presentations

CreaPen is an extremely simple yet powerful screen annotation and recording software. You can easily write on top of any other application that is currently active on the desktop, even on a running video. You can then save your annotations as an image file or even record the whole session as a video for sharing. It is a useful tool for presenters to communicate and share ideas during a live session, for educators to create effective video tutorials and for salespeople to create impressive video presentations.



Text Input



Whiteboard



Multiple Pages



Screen
Recording



Screen
Annotation



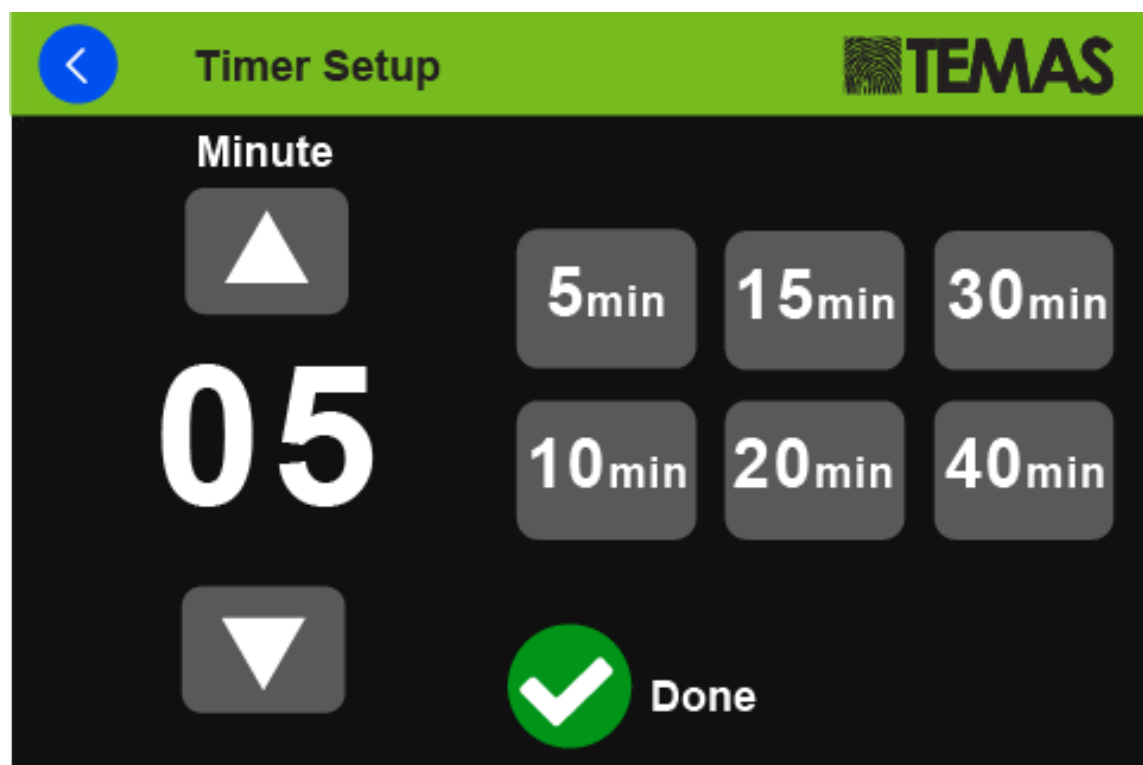
Web Camera





Application

3,5" Touch screen Timer & Clock





Amplifier: Atlona Stereo/Mono Audio Amplifier



- AT-PA100-G2 is a class D amplifier which uses less energy, doesn't require heat sinks or power transformers, making it smaller than a class A/B amplifier
- Stereo, mono, and bridge audio speaker output connections available through captive screw
- Has a variable 3.5mm audio loop out for cascading to another AT-PA100-G2 or connecting to
- other audio amplifiers
- 3 pin captive screw MIC input can support balanced and unbalanced signals
- Energy efficient standby mode only requires 4Ws of power. AT-PA100-G2 goes into standby mode if an audio signal isn't present
- Control through the panel buttons, an (optional) IR remote, and RS-232
- 3 position input switch: 48V phantom power - best for condenser MICs without battery power
- MIC - Great for Dynamic MICs and battery powered condenser MICs
- Line Connect a Wireless
- Volume, Bass, and Treble can be controlled through RS-232, IR, or panel buttons

Rated output	20 W x 2 40 W x 1 (Bridged Operation)
Gain	32dB
Frequency Range	20Hz to 20KHz
Signal/Noise Ratio	80dB (at max output)
Total Harmonic Distortion	1%(1KHz), 0.3% (20KHz) -- at nominal levels
Input Impedance	Input 1&2: >10K Ω
MIC Input Impedance	48V: 35K Ω MIC: 10K Ω LINE: 75K Ω
Output Impedance	3.5mm Loop Out: 50 Ω stereo Speaker out: 4 ~ 8 Ω Amplifier
Stereo Channel Separation	75dB from 20Hz to 20KHz
Common Mode Rejection Ratio	70dB from 20Hz to 20KHz
MIC Audio Detection Delay	1ms
Temperature Operating	0°C to 40°C 32°F to 104°F
Temperature Storage	-20°C to 60°C -4°F to 140°F
Temperature Humidity	20 to 90% non-condensing
Power Consumption	40W
Power Idle Consumption	4W
Power Supply	Input: AC100~240V 50/60Hz Output: DC 24V/5A

Dual Cone Loudspeaker



The Apart CM4T is the ideal match between size and sound! Just one size bigger than a halogen-spot model (CM3T), this 70 /100 volt loudspeaker looks great and produces an amazing powerful sound.

Features

- Outside diameter in mm 135
- Cutout in mm 108
- Loudspeaker system dual cone
- Woofer cone material coated paper
- Colour white / black / silver
- 70V transformer power taps in watts 6 - 3 - 1.5 - 0.75
- Low impedance dynamic power in watts 30
- SPL 1W/1m in dB 88 frequency response in Hz 90 - 19K
- Applicable low impedance yes



Technical specifications

Lecturer Panel

Screen Specifications	22"
Resolution	1920x1080
Brightness	250 cd/m2
Aspect Ratio	16:9
Number of Touch Point	10 Points Capacitive

Lecturer Panel PC

CPU	Intel Core i3
RAM	4 GB DDR4
HDD	120 GB SSD
Operating System	Windows 10 Embedded IoT

Microphone

Length	18"
No of microphone	1 pcs
Output Connector	3-way XLR(Male)
Microphone Type	Cardioid
Frequency Response	50-18 kHz
Power ON Indicator	LED
Power Requirement	Phantom Power (48V)

Outputs (Bottom of Podium)

HDMI	Available
Ethernet	RJ45
XLR for microphone	3-way XLR(Male)
USB	USB 2.0

Mechanical Specs

Outline Dimension(mm)Set	754 x 810 x 1049
Outline Dimension(mm)Package	890 x 906 x 1255
Weight(kg)	Set: 104 kg Package: 161 kg