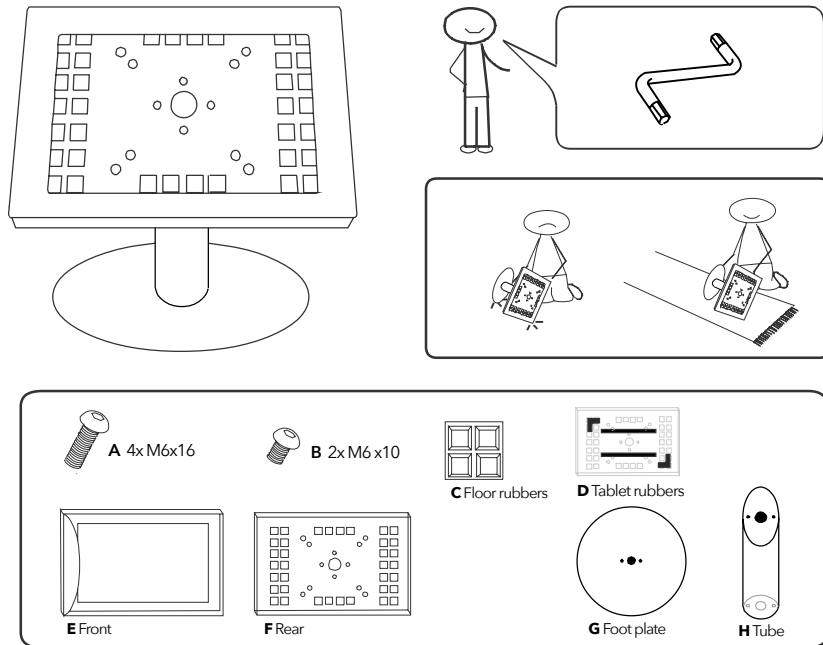


# SECURO 12"-13" DESK STAND



**Before you start:** Determine and fix cell rubbers [D] position with tablet in the exact middle of the casing. (See manual - *Fixing the rubbers*)  
 Also determine the position of the screen; Portrait or landscape.

- 1 **When not present:** Place floor rubbers [C] underneath the foot plate [G].
- 2 Fit plate [G] on flat side tube [H]. Use 2x [A] M6 x 16.
- 3 Fit the rear of the casing [F] on diagonal side tube [H]; Use 2x [A] M6 x 16.
- 4 **Optional:** Guide power cable through hole in casing and tube to bottom.  
**Optional:** Install additional key lock (see manual - Key lock)
- 5 Place tablet and fit front part [E] of the casing over the rear part [F], while pressing tablet onto cell rubbers [D].
- 6 Position tablet into casing without reducing the pressure on the tablet
- 7 Fasten both parts of the casing with screws; Use 2x [B] M6 x 10.  
 And/or close the additional key lock

