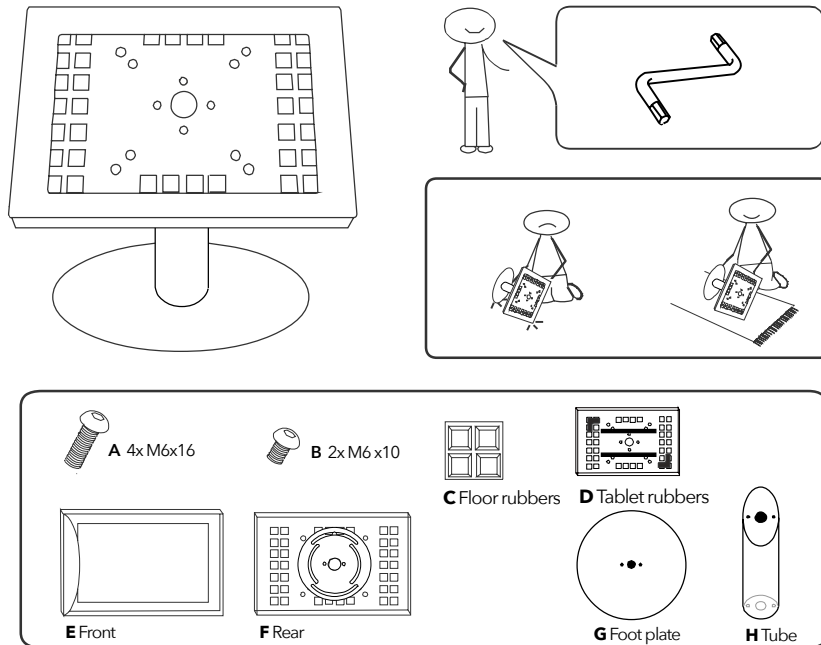


SECURO 9"-11" DESK STAND



Before you start: Determine and fix cell rubbers [D] position with tablet in the exact middle of the casing. (See manual - *Securo Fixing the rubbers*)

- 1 When not placed yet:** Place floor rubbers [C] underneath the foot plate [G].
- 2** Fit foot plate [G] on flat side tube [H]; Use [A] M6 x 16.
- 3** Fit the rear of the casing [F] on diagonal side tube [H]; Use [A] M6 x 16.
- 4 Optional:** Guide power cable through hole in casing and tube to bottom.
Optional: Install additional key lock (see manual - Key lock)
- 5** Place tablet and fit front part [E] of the casing over the rear part [F], while pressing tablet onto cell rubbers [D].
- 6** Position tablet into casing without reducing the pressure on the tablet
- 7** Fasten both parts of the casing with screws; Use [B] M6 x 10.
And/or close additional key lock

